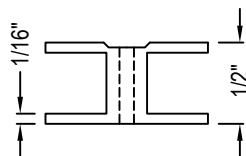
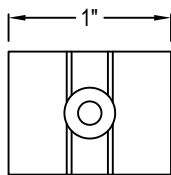
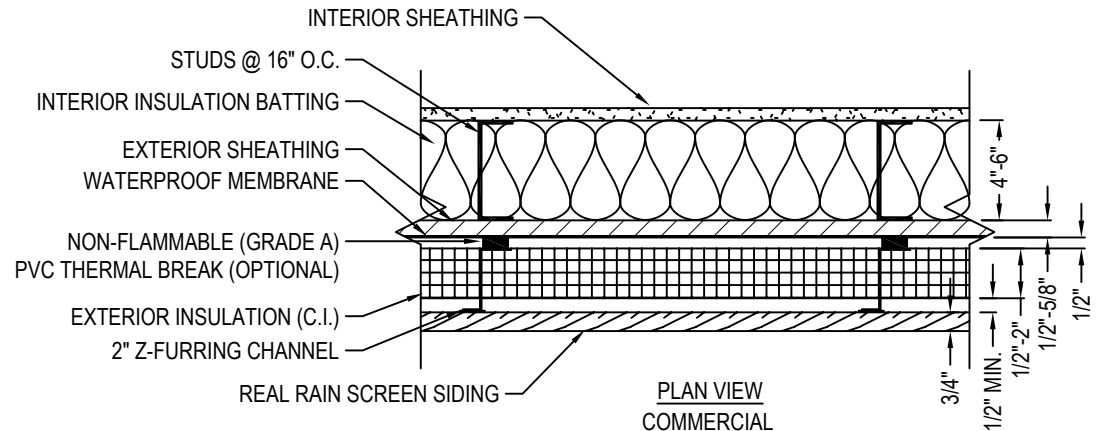
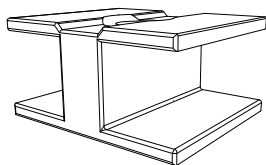


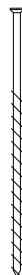
☒ SELECT DESIRED HARDWOOD SIDING:

- ☐ IPE
- ☐ CUMARU
- ☐ MASSARANDUBA
- ☐ TIGERWOOD
- ☐ GARAPA

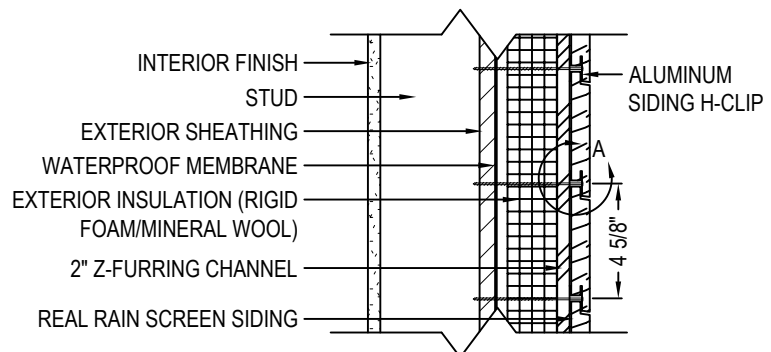


DETAIL A

ALUMINUM HIDDEN H-CLIP  
599 MAGNI-COATED



SELF-TAPPING SCREW  
#8 SQUARE DRIVE,  
599 MAGNI-COATED



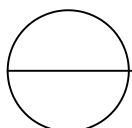
CROSS SECTION  
COMMERCIAL

#### MANUFACTURER NOTES:

1. VERTICAL FURRING STRIPS CAN BE CENTER-RIPPED PRESSURE TREATED 1X4 OR FIRE RESISTANT (GRADE A) PVC (THERMAL BREAK).

#### NOTES:

1. INSTALLATION TO BE COMPLETED IN ACCORDANCE WITH MANUFACTURER'S SPECIFICATIONS.
2. DO NOT SCALE DRAWING.
3. THIS DRAWING IS INTENDED FOR USE BY ARCHITECTS, ENGINEERS, CONTRACTORS, CONSULTANTS AND DESIGN PROFESSIONALS FOR PLANNING PURPOSES ONLY. THIS DRAWING MAY NOT BE USED FOR CONSTRUCTION.
4. ALL INFORMATION CONTAINED HEREIN WAS CURRENT AT THE TIME OF DEVELOPMENT BUT MUST BE REVIEWED AND APPROVED BY THE PRODUCT MANUFACTURER TO BE CONSIDERED ACCURATE.
5. CONTRACTOR'S NOTE: FOR PRODUCT AND COMPANY INFORMATION VISIT [www.CADdetails.com/info](http://www.CADdetails.com/info) AND ENTER REFERENCE NUMBER 5376-004.



## REAL RAINSCREEN SIDING (FOR METAL STUDS)

COMMERCIAL APPLICATION: TYPICAL PLAN AND SECTION VIEW